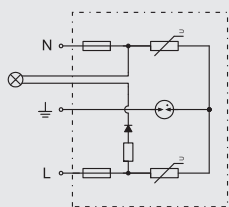
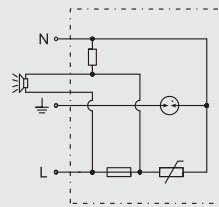
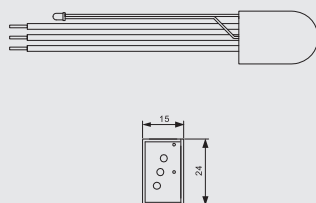


BR275-6

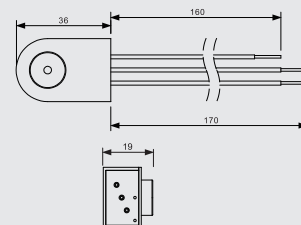
Type 3 Surge Arrester



BR275-6-L



BR275-6-B



■ Type 3 surge arrester is installed between LPZ2 and LPZ3, it can provide protection for equipments.

		BR275-6-L	BR275-6-B
SPD classification according to EN61643-11		Type 3	Type 3
SPD classification according to IEC61643-11		Class III	Class III
Nominal a.c. voltage	Un	230V	230V
Max. continuous operating a.c. voltage	Uc	275V	275V
Max. continuous operating d.c. voltage	Uc	300V	300V
Nominal discharge current (8/20μs)	In	3kA	3kA
Combined impulse	Uoc	6kV	6kV
Voltage protection level	Up	≤1.3kV	≤1.3kV
Response time	tA	≤25ns	≤25ns
Operating temperature range	Tu	-40°C-80°C	-40°C-80°C
Operating state/fault indication		LED	BEEP
For mounting on		35mm Din rail	35mm Din rail
Enclosure materail		Thermoplastic UL94-V0	Thermoplastic UL94-V0
Degree of protection		IP20	IP20
Order Code		B8355	B8357