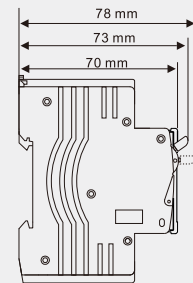
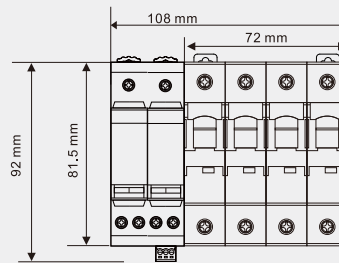
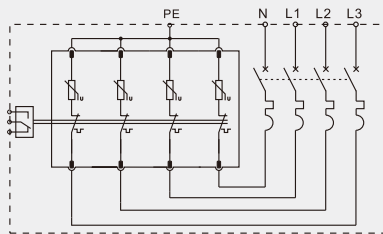
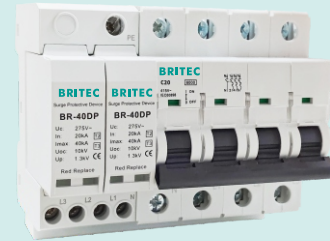


BRCB-15/30/40 TP

Type 2 Surge Arrester
Combined with Mini Circuit Breaker



■ BRCB combined surge arrester can provide surge protection for TN-S system.

	BRCB-15 TP	BRCB-30 TP	BRCB-40 TP
SPD classification according to EN61643-11	Type 2	Type 2	Type 2
SPD classification according to IEC61643-11	Class II	Class II	Class II
Nominal a.c. voltage U_n	230V	230V	230V
Max. continuous operating a.c. voltage U_c	275V	275V	275V
Mcb rated current	16A	20A	32A
Nominal discharge current (8/20 μ s) I_n	5kA	15kA	20kA
Max. discharge current (8/20 μ s) I_{max}	15kA	30kA	40kA
Voltage protection level U_p	$\leq 1.1kV$	$\leq 1.3kV$	$\leq 1.3kV$
Response time t_A	$\leq 25ns$	$\leq 25ns$	$\leq 25ns$
Operating temperature range T_u	-40°C-80°C	-40°C-80°C	-40°C-80°C
Operating state/fault indication	green/red	green/red	green/red
Cross-section area (Min.)	2.5mm ²	2.5mm ²	2.5mm ²
Cross-section area (Max.)	15mm ²	15mm ²	15mm ²
For mounting on	35mm Din rail	35mm Din rail	35mm Din rail
Enclosure material	Thermoplastic UL-94V0		
Degree of protection	IP20	IP20	IP20
Order Code	B7914	B7916	B7918
Order Code(with remote signal)	B7915	B7917	B7919